

Date: 3/20/18

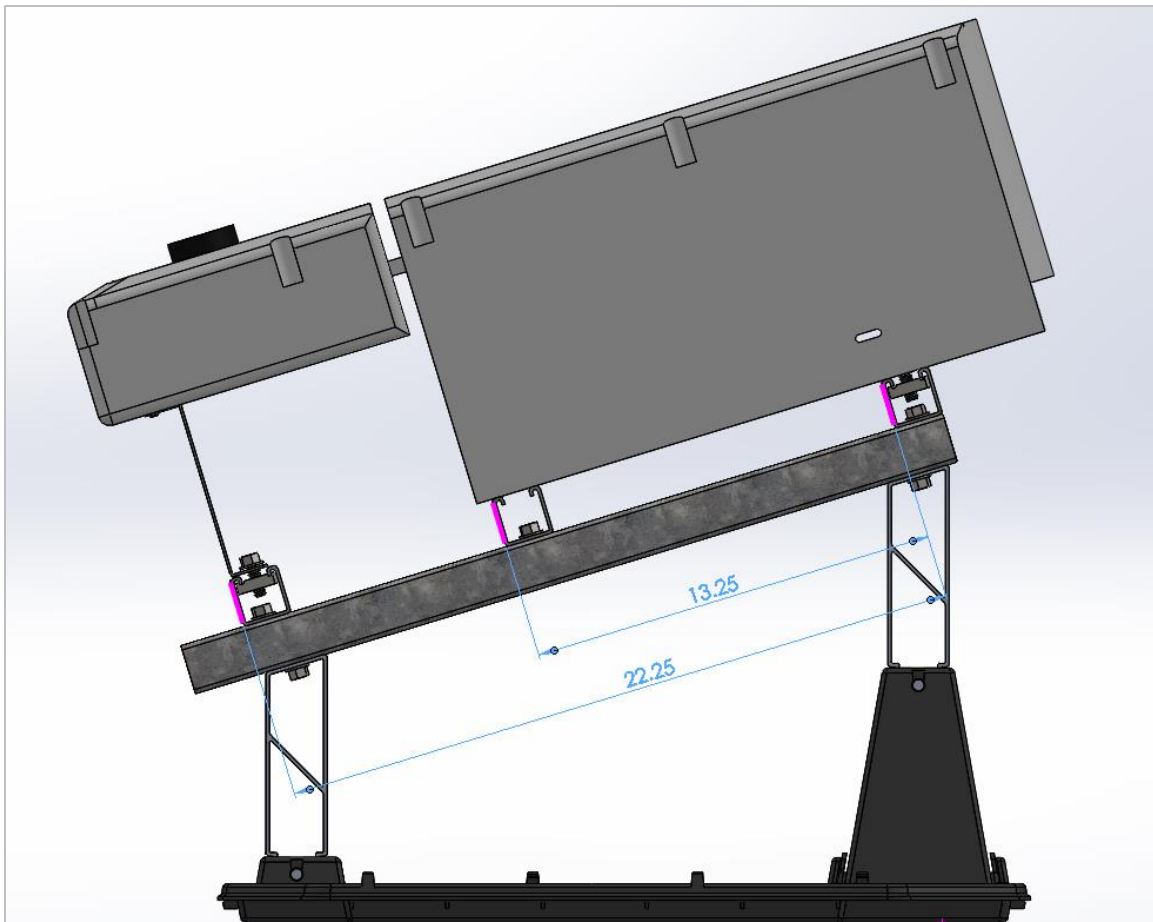
Subject: SolarEdge 33kw Inverter Mounted to the Ecolibrium Solar EcoMount racking system

To Whom It May Concern.

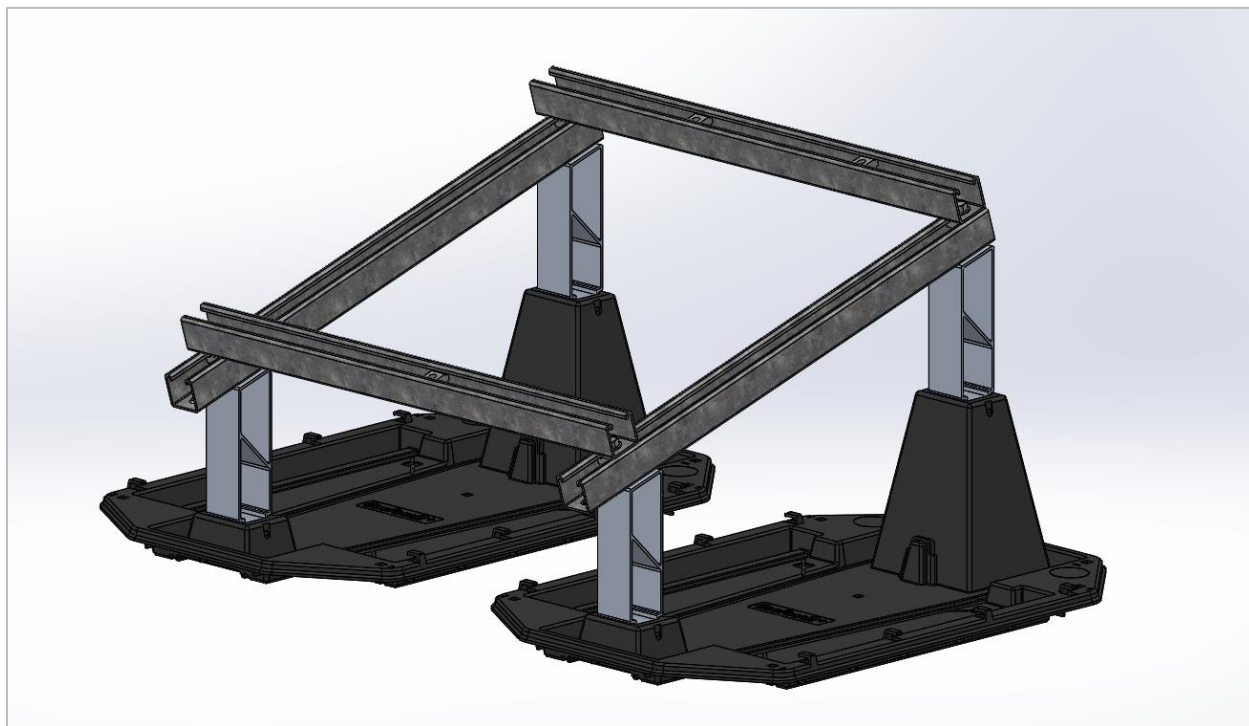
Ecolibrium Solar has evaluated the SolarEdge 33kw 3-phase inverter and DC quick disconnect unit for use with the EcoMount inverter rack. The following instructions shall addend the standard Ecolibrium Solar EcoMount installation instructions.

It should be noted, that in this configuration, the east/west strut members of the EcoMount should be installed 22.25" apart to accommodate the SolarEdge inverter and DC Disconnect. Furthermore, Ecolibrium Solar recommends installing the DC Disconnect bracket as shown below.

Lastly, a 3<sup>rd</sup> east/west rail should be installed to support the underside of the main inverter housing. This extra strut length and hardware can be purchased from Ecolibrium Solar or purchased locally.



## Step 1:

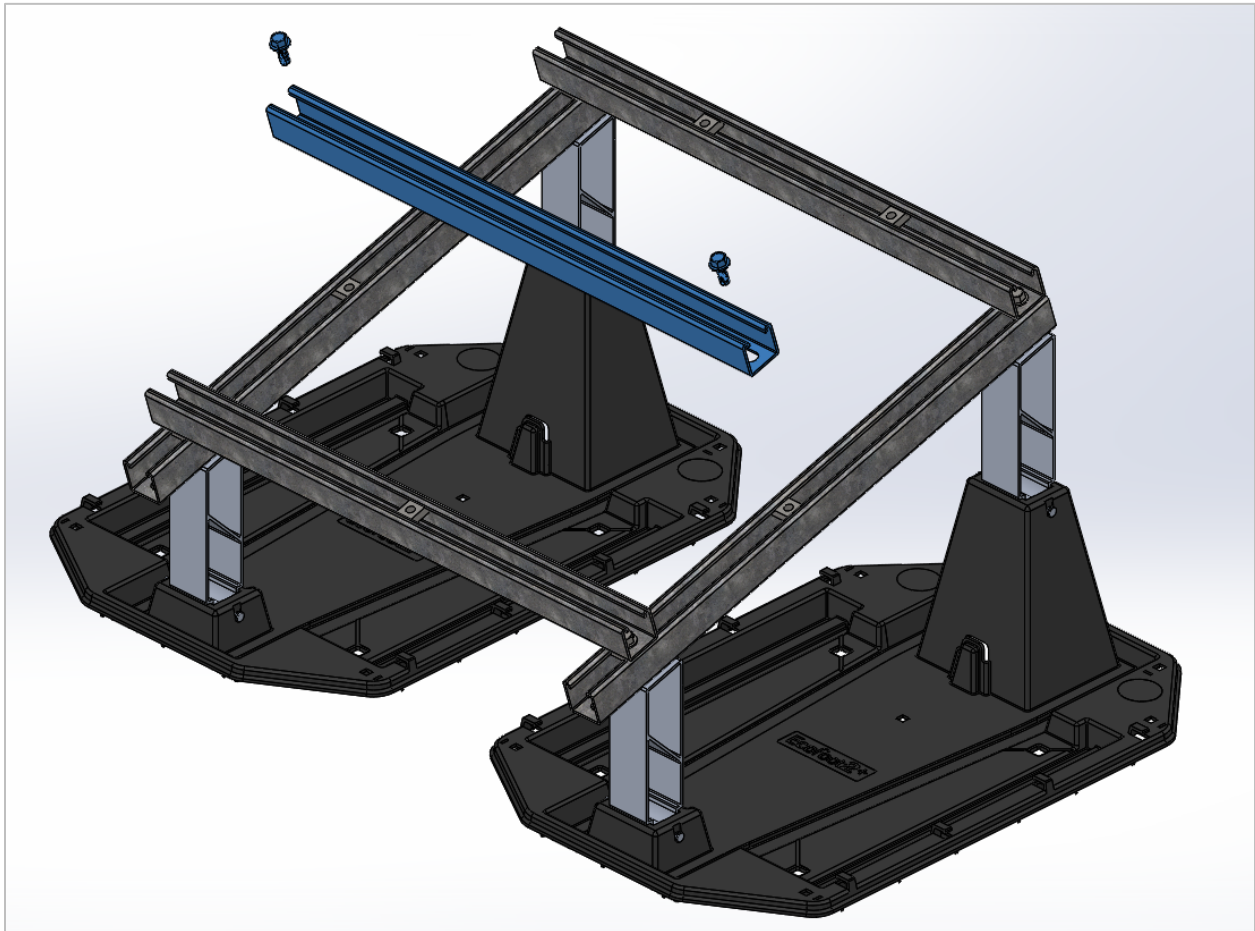


Assemble the EcoMount unit per Ecolibrium Solar provided instructions. Specifically, complete steps 1-4, as shown above.

Instructions may be found online at:

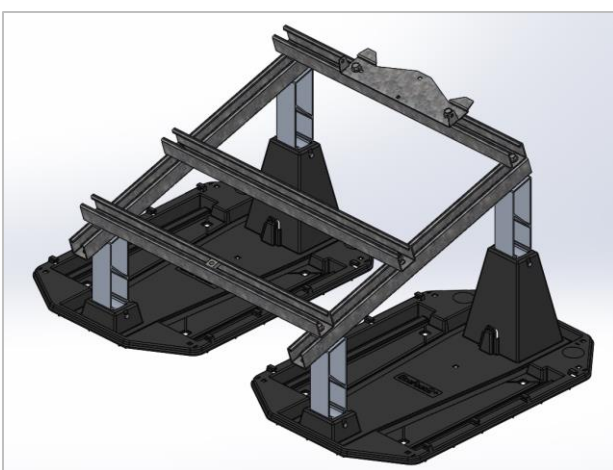
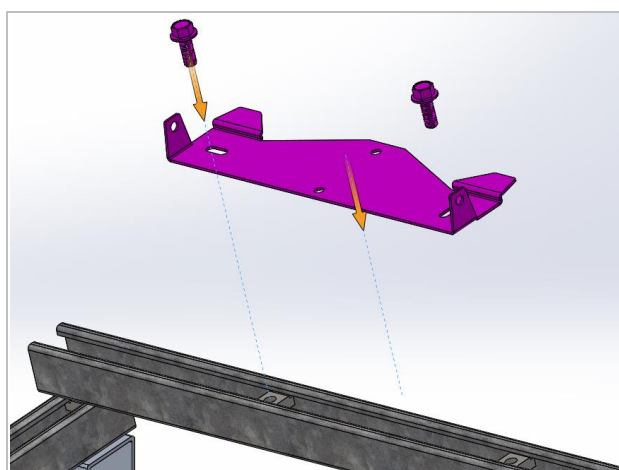
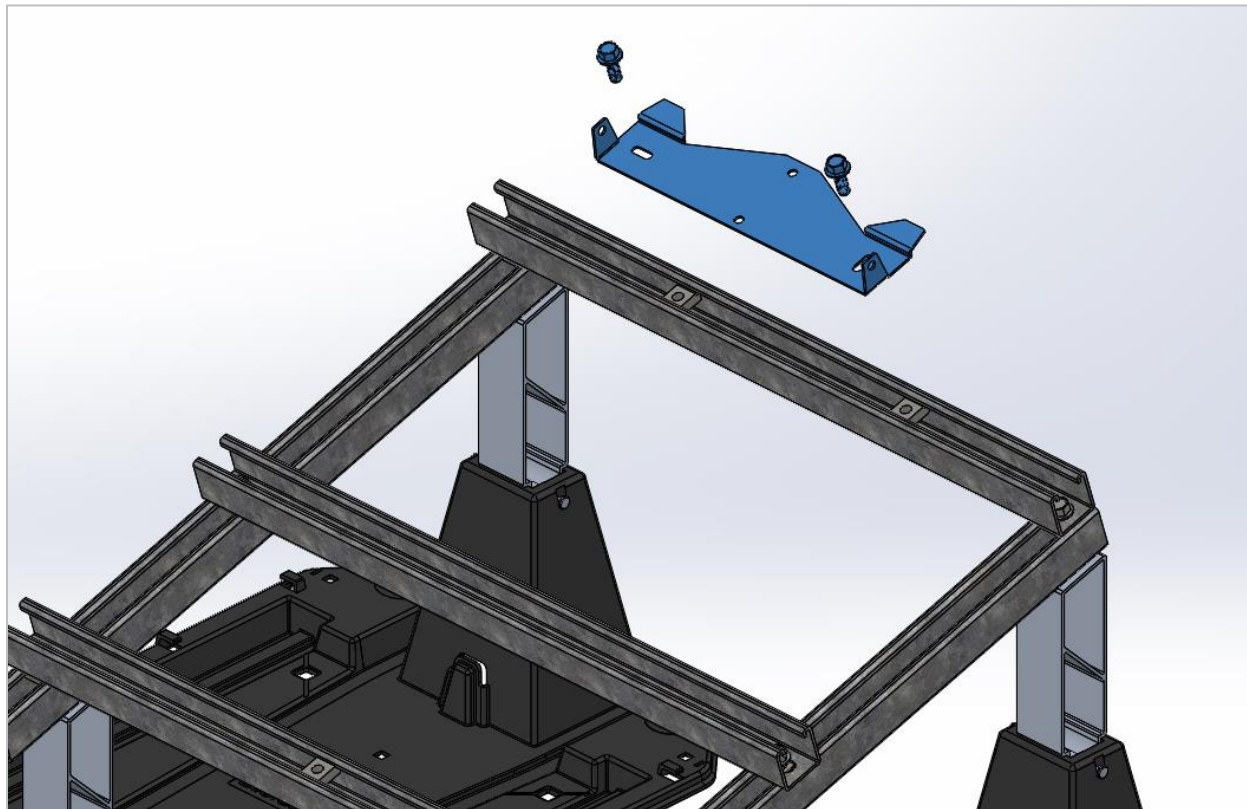
[http://ecolibrumsolar.com/downloads/support/EcoMount\\_Installation\\_Guide.pdf](http://ecolibrumsolar.com/downloads/support/EcoMount_Installation_Guide.pdf)

## Step 2:



Install a third east/west strut segment 13.25 inches on center down from the northmost east/west strut segment. Strut segment shall be cut to length to match those provided in the EcoMount kit. Installation may be accomplished by using (2) 3/8"-16 x 1" stainless steel serrated flange bolts and (2) 3/8"-16 stainless steel strut nuts.

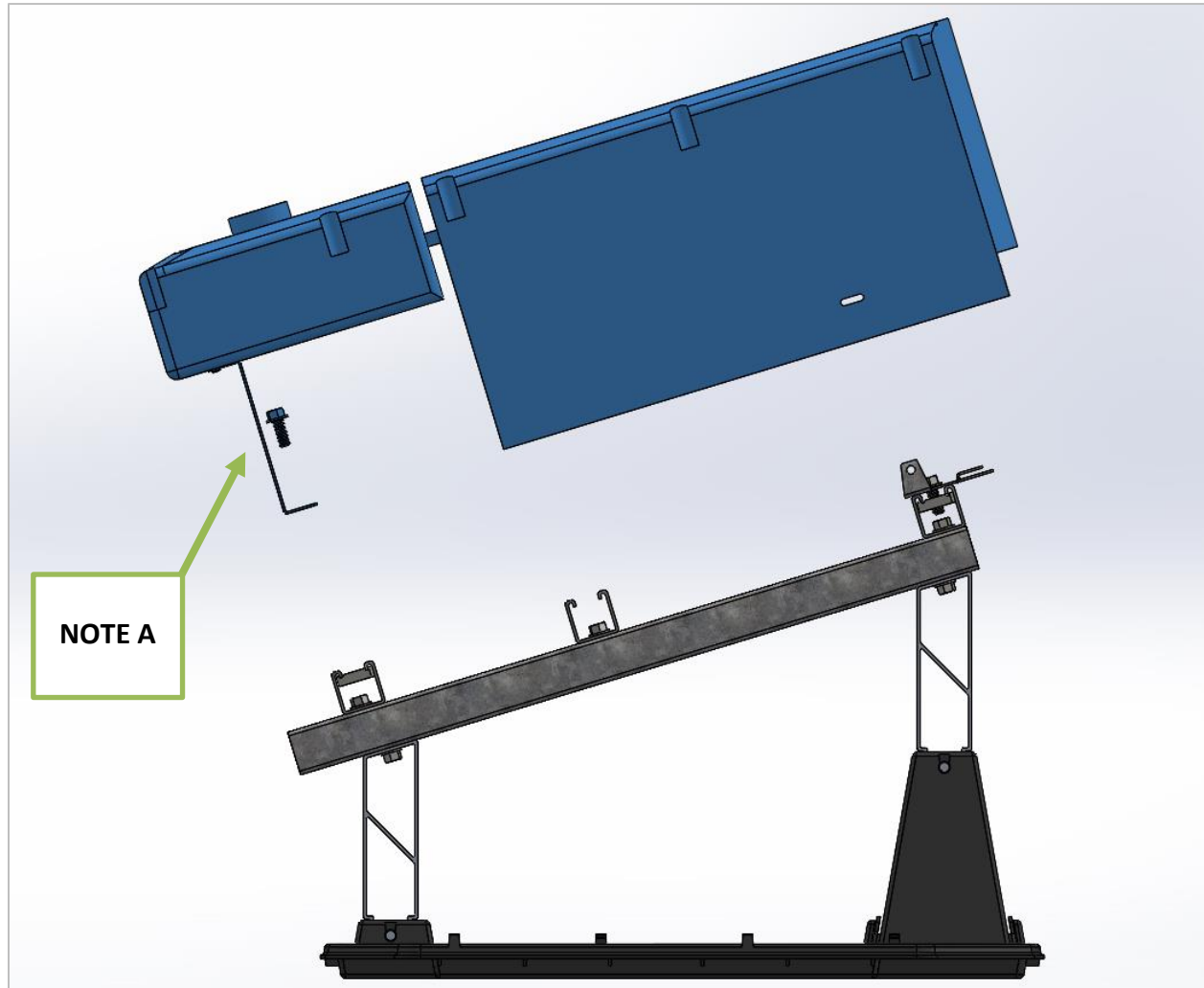
### Step 3:



Align SolarEdge inverter bracket with high side of the EcoMount, securely bolt the bracket to the length of strut using serrated flange nuts and bolts of appropriate length.

Recommended: (2) ¼"-20 x 2" stainless steel serrated flange bolts, (2) ¼"-20 stainless steel nuts, and (2) ¼" stainless steel fender washers.

## Step 4:



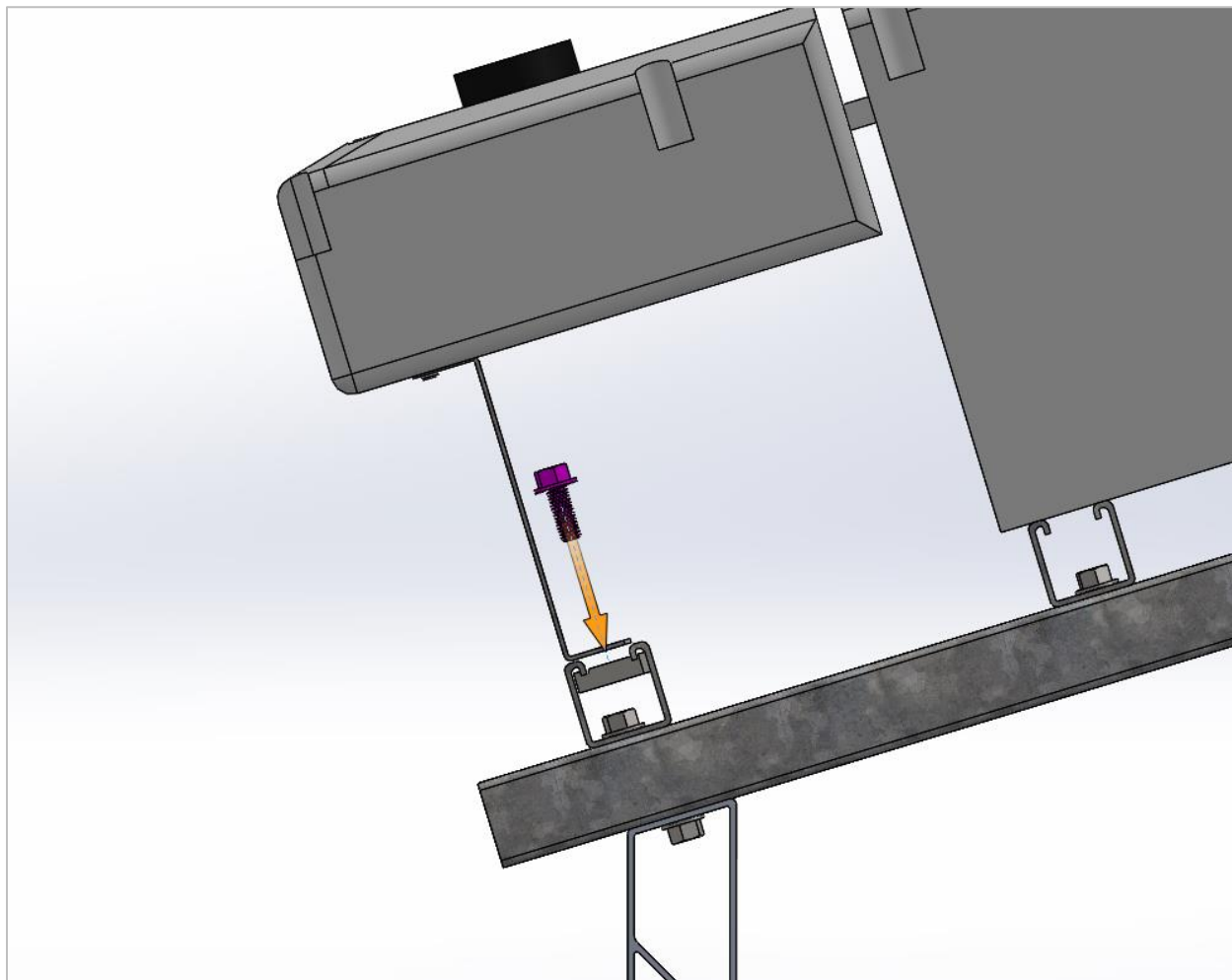
Following the installation instructions provided by SolarEdge, lower the inverter assembly onto the EcoMount unit, securing the inverter to the mounting bracket and secure using the manufacturer provided hardware and methods.

If questions arise pertaining to the SolarEdge assembly and installation process, please refer to the SolarEdge Inverter user manual.

NOTE A: Ecolibrium Solar recommends reversing the direction of the SolarEdge provided DC Disconnect support bracket for ease of installation to the lower EcoMount strut.

INSTALLATION NOTE: this may require a team lift to accomplish safely and correctly.

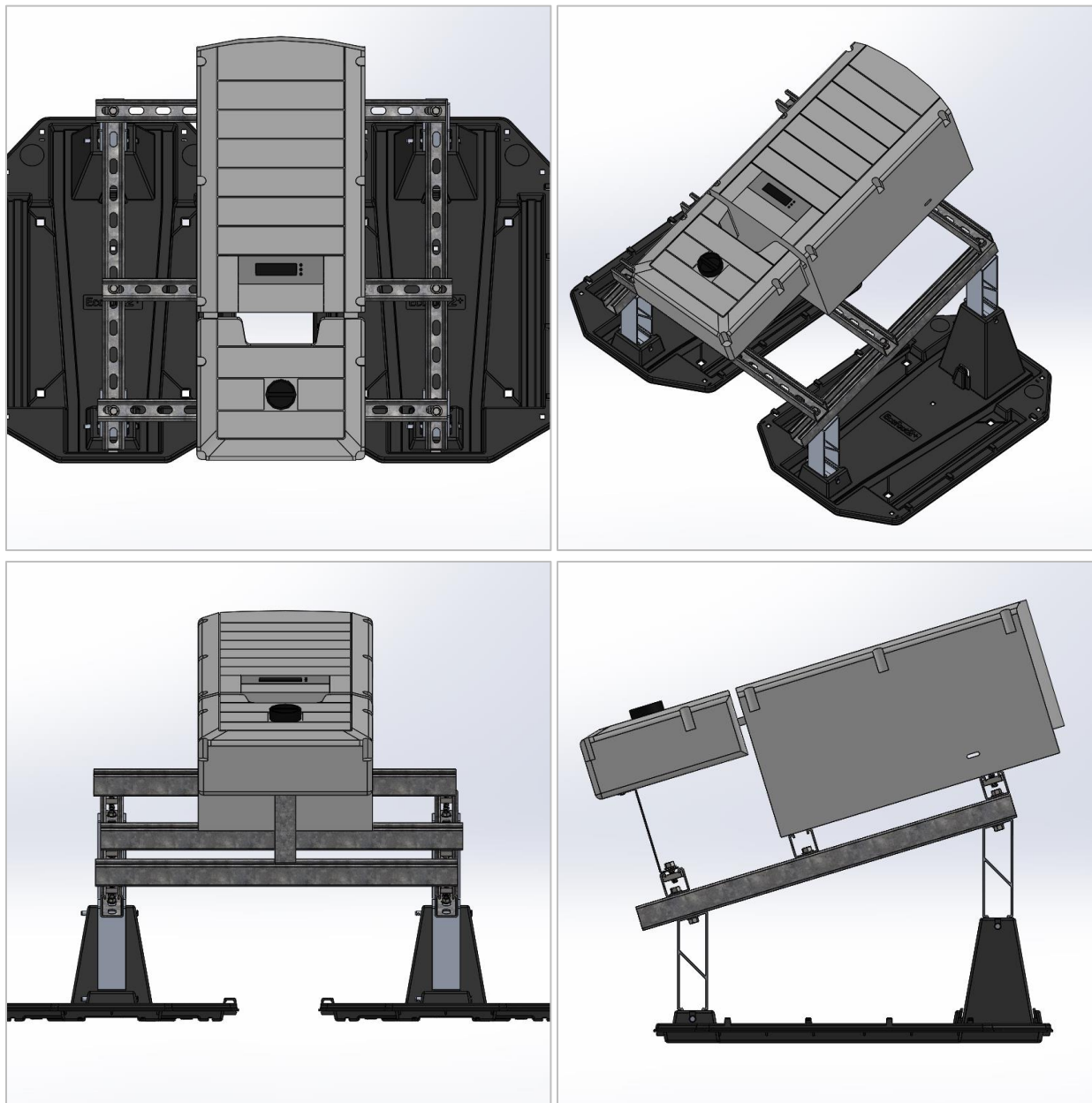


**Step 5:**

Secure the DC Disconnect bracket to the lower strut member using a serrated flange bolt and nut.

Recommended: (1) ¼"-20 x 1" stainless steel serrated flange bolt, (1) ¼"-20 stainless steel strut nut

## Finished Product:



The finished product should look approximately like this.

**INSTALLATION NOTE:** This installation guide is provided for reference only. When in doubt, or if technical questions arise (torque specs, ground/bond path, EcoMount ballast requirements, etc.) please contact Ecolibrium Solar or SolarEdge directly for clarification.