



Trust your rails at every angle.

The IronRidge Tilt Mount System supports a wide range of solar module tilting angles, while also resisting the extreme wind and snow forces experienced over a building's lifetime.

Every component has been carefully engineered and rigorously tested, and the entire system uses only aluminum and stainless steel materials to resist corrosion.



Roof Friendly

Lightweight and compatible with industry-standard attachments.



PE Certified

Pre-stamped engineering letters available in most states.



Strength Tested

All components evaluated for superior structural performance.



Design Assistant

Online software makes it simple to create, share, and price projects.



Integrated Grounding

UL 2703 system eliminates separate module grounding components.

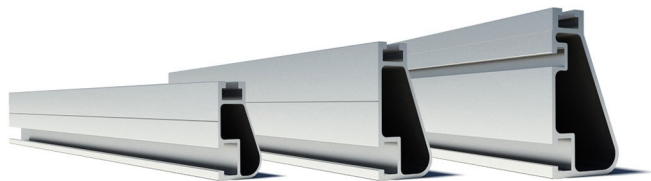


20 Year Warranty

Twice the protection offered by competitors.

Core Components

XR Rails



Attach directly to Tilt Legs. Available in three targeted sizes to support specific wind and snow loads.

- Unique curved profile
- Spanning capabilities up to 12'
- Clear and black anodized finish options

Tilt Legs

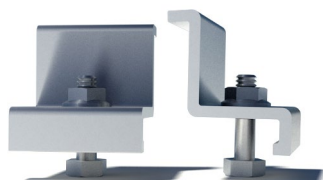


Tilt assembly to desired angle, up to 30 degrees. Kits include South and North Tilt Leg and all hardware.

- Available in multiple lengths for a wide angle range
- Assembled South Tilt Legs include angle indicators
- Legs are electrically bonded to rails

Clamps & Grounding

End Clamps



Slide in clamps and secure modules at ends of rails.

- Mill finish and black anodization
- Sizes range from 1.22" to 2.3"
- Optional Under Clamps

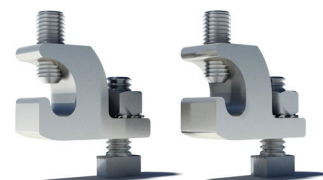
Grounding Mid Clamps



Attach and ground modules in the middle of the rail.

- Bonding T-bolt
- Reusable up to 10 times
- Mill and black finish options

T-Bolt Grounding Lugs

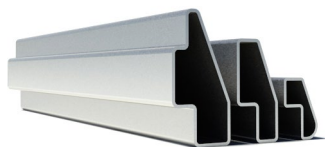


Ground system and connect to copper wire from the rail's top slot.

- Easy top-slot mounting
- Eliminates drilling
- Swivels in any direction

Accessories

Internal Splices



XR Rails use internal splices for seamless connections.

- Includes self-tapping screws
- Varying versions to match rails
- Grounding Straps offered

End Caps



Provide a finished look for rails while preventing debris buildup.

- Easy snap-in installation
- Varying versions to match rails
- UV-stabilized polymer

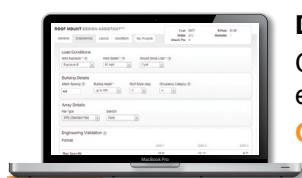
Wire Clips



Organize electrical wires from the rail's top slot.

- Simple snap-in installation
- Holds up to ten 5mm wires
- UV-stabilized polymer

Free Resources



Design Assistant

Go from rough layout to fully engineered system. For free.

[Go to IronRidge.com/design](http://IronRidge.com/design)



NABCEP Certified Training

Earn free continuing education credits, while learning more about our systems.

[Go to IronRidge.com/training](http://IronRidge.com/training)