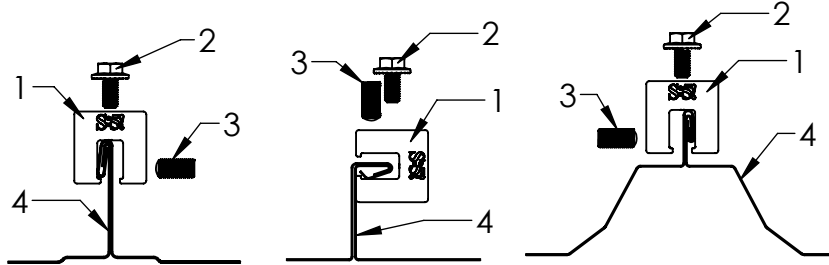
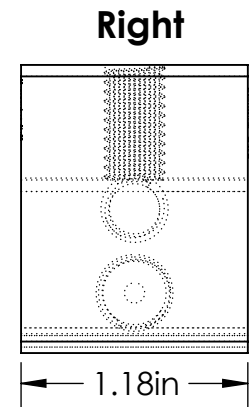
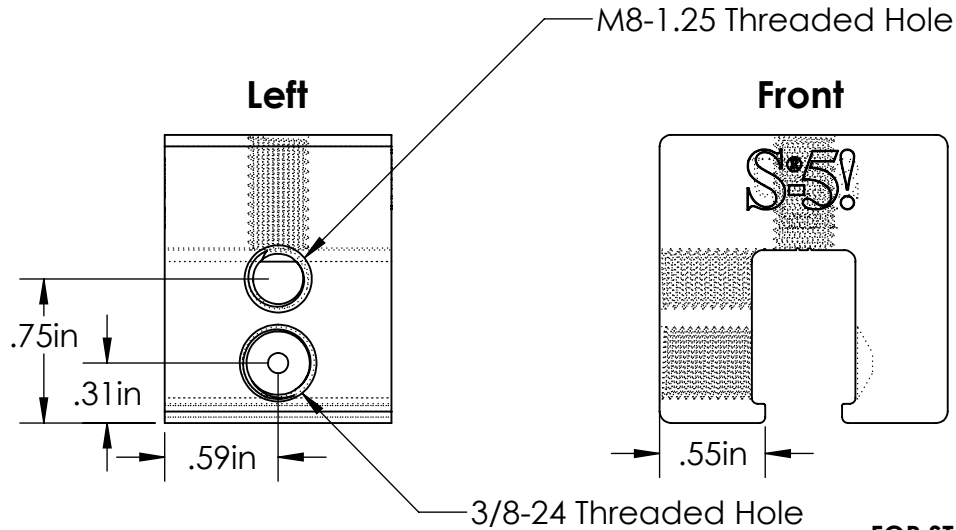
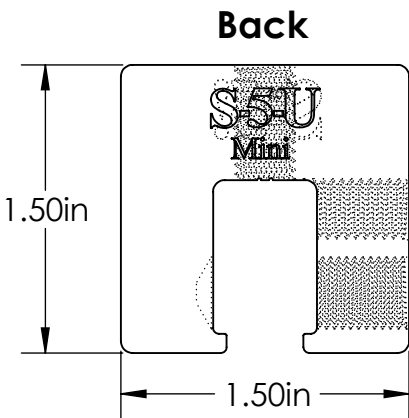
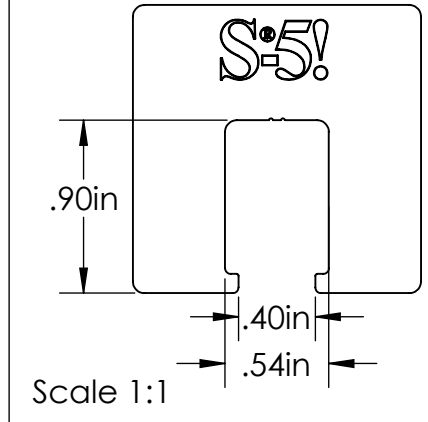
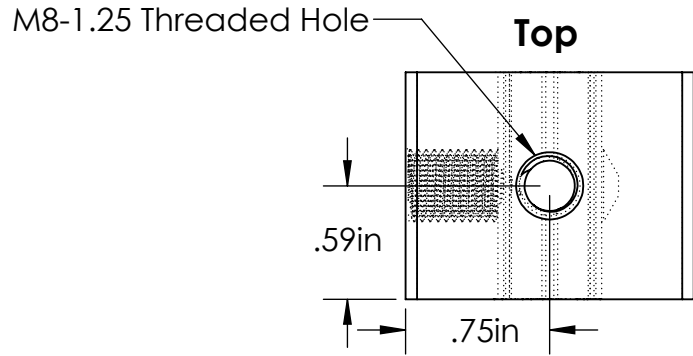
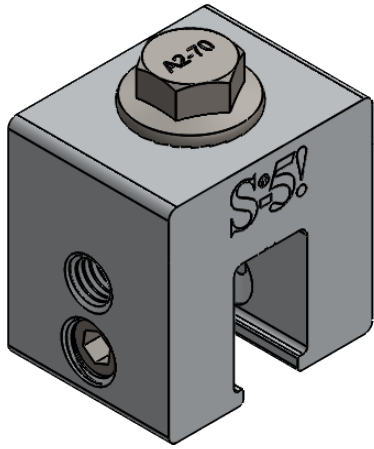


S-5-U Mini



General Notes:

1. S-5-U Mini
2. M8-1.25 SS Hex Flange Bolt (13mm Socket)
3. 3/8-24 SS Round Point Setscrew (3/16 Hex Drive)
4. Example roof

FOR STANDING SEAM SPECIFIC MECHANICAL LOAD TEST INFORMATION AND CLAMP INSTALLATION INFORMATION PLEASE VISIT: WWW.S-5.COM

MATERIAL:	6061 T6 Al
EST ASSEMBLY WEIGHT:	0.244 lbs
SUPPLIED HARDWARE:	M8-1.25 x 16 mm bolt 3/8-24 x .800 Setscrew
SCALE:	1:1
EST. WEIGHT:	Clamp: 0.192 lbs Setscrew: 0.0170 lbs Bolt: 0.0345 lbs



METAL ROOF INNOVATIONS, LTD.
8655 TABLE BUTTE RD
COLORADO SPRINGS, CO 80908
719-495-0518
719-495-0045(FAX)

TITLE S-5-U Mini		
DRAWING NO.	U11-B-1-D	DRAWN BY Kati Kadakas
		DATE 4/11/2016

S-5® PRODUCTS ARE PROTECTED BY MULTIPLE U.S. AND FOREIGN PATENTS.
VISIT OUR WEBSITE AT WWW.S-5.COM FOR COMPLETE INFORMATION ON PATENTS AND TRADEMARKS.